



HPL review



Providing up-to-date information on the Huey P. Long Bridge Widening Project

March 2008

Inside this issue:

Construction update **2**

New phone line **3**

My Huey P **3**

TIMED Program **4**

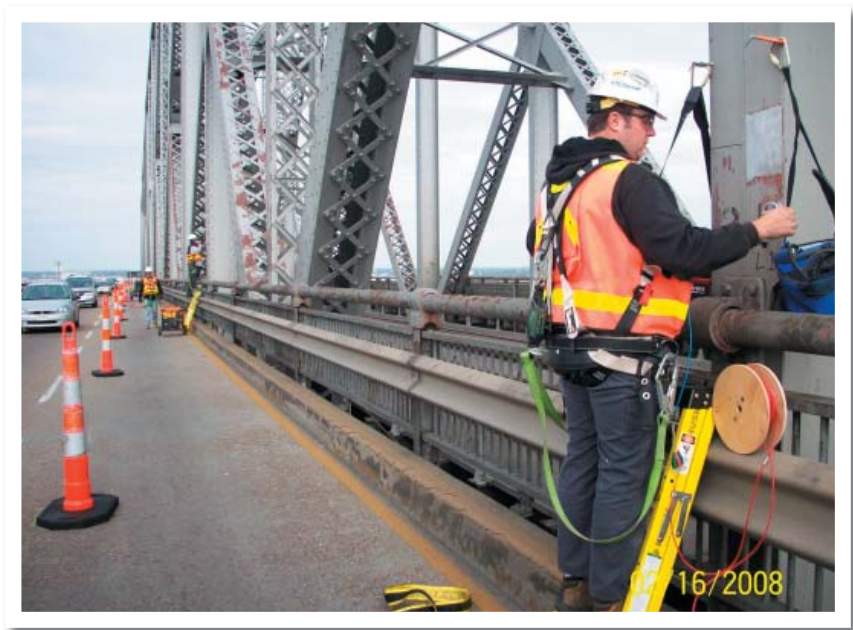
SAVE THE DATE

April 9

BAT Meeting
1-2 p.m.
East Bank Regional Library
4747 W. Napoleon Ave.
Metairie, LA 70001

April 10

CAT Meeting
7-8 p.m.
Bridge City Fire Station
2220 Bridge City Ave.
Bridge City, LA 70094



CONTACT INFO

Public Outreach Office:

Joseph S. Yenni Building
1221 Elmwood Park Blvd.
Suite 311
Jefferson, LA 70123

Public Outreach Line:

(504) 731-4200

Toll Free:

(866) 846-3352

Website:

www.hueypbridge.com

Email:

hueypbridgeinfo@latimedmgrs.com

My Huey P.:

www.myhueyp.com

Safety gauges to monitor bridge during truss widening

As Phase III of the Huey P. Long Bridge Widening Project gets underway, CTL Group, a Skokie, Ill. based firm, is installing digital stress monitors to keep a close eye on how the bridge will react to structural changes of the truss widening. The CTL Group specializes in structural monitoring, nondestructive testing and evaluation and repair of bridges worldwide.

About 800 digital and static strain gauges are being installed on the bridge that will transmit data to engineers until project completion in 2013.

Lane closures for the gauge installation on the bridge are ongoing. These

closures are scheduled to last until approximately May 2008. All lane closure notices are subject to change.

There will be no lane closures on the bridge from March 24 to 29 to accommodate for Zurich Classic of New Orleans golf tournament traffic.

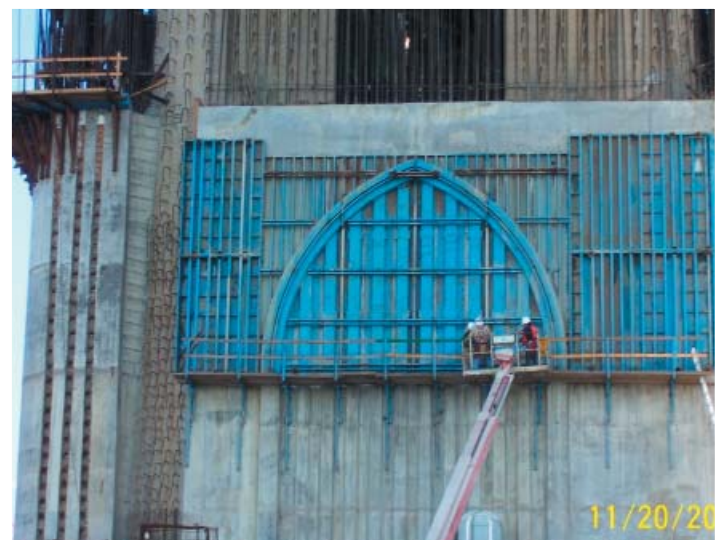
For the most current lane closure information, motorists can call the public outreach 24/7 automated phone line at (504) 731-4200 or visit www.hueypbridge.com.

CONSTRUCTION PROGRESS



Clockwise from top left: Worker installs digital stress gauges. The recent lane closures have been a result of the installation of the stress gauges on the bridge; View of Pier 2 from East Bank; Tightened bolts on the top tie girder of Pier 3. The single yellow line indicates the bolt tightness has been checked by the contractor. The yellow X indicates the bolt has been check by LTM inspectors; Removing center fill forms on Pier 2. The design on the forms is for aesthetic purposes only; Worker tightens bolts on the top tie girder of Pier 3.

For more photos and updates on construction, visit our Photo Gallery on our website (www.hueypbridge.com) or call (504)731-4200.



MY HUEY P.

What makes the Huey P. your bridge? Tell us your personal stories.

The Huey P. Long Public Outreach Office is collecting stories, past and present, about drivers' experience on the historic bridge. Several community members have already submitted their stories about braving the narrow lanes, walking along the river, family members involved in the original construction and other memories.

All submissions received will not be returned and become

property of Louisiana's TIMED Program and may be used in future promotional campaigns.

To submit your story, visit www.myhueyp.com or send an email to info@hueypbridge.com.

We look forward to hearing and sharing your stories!



Circa 1932. Photo submitted by Bob Spahn.

PUBLIC OUTREACH PHONE LINE

The Huey P. Long Bridge Widening Project public outreach office has launched an automated telephone line to provide the public with current lane closure information, construction updates and project information. The service may be accessed 24 hours a day, seven days a week by dialing (504) 731-4200 from any touch-tone phone.

"The phone line is a way for the public to access up-to-date information about the project, such as lane closures on the bridge, if they do not have access to the Internet," said

Project Spokesperson Meghan Legaux. "Current information is still available on our website, www.hueypbridge.com, but the phone number adds a convenient way to access current information about the project."

Callers are greeted with a pre-recorded message and can choose from several options. The public may also leave voicemail messages for project staff.

The automated phone line is just one way to access information about the \$1 billion project.

The public can also visit the outreach office in the Joseph S. Yenni Building, 1221 Elmwood Park Blvd., Suite 311, Jefferson, La. during its public hours on Wednesdays and Thursdays from 10 a.m. to 3 p.m. In addition, the project hosts free bimonthly Business and Community Advisory Team meetings (BAT and CAT meetings).

Finally, the public may access information about the project through the website, www.hueypbridge.com.

MEET THE BRIDGE BUILDER

P.J. "Buck" Frederick

Role on project:

Deputy Construction Manager-
Major Bridges -- Responsible for
the management of Construction
Administration and Construction
Management of bridges.

Brief bio:

Lifelong resident of Louisiana. Born
and reared in Vermilion Parish.
Married with three children and two
grandchildren. A 1957 graduate of
University of Southwestern Louisiana
with a B.S. in Civil Engineering. Worked
on I-210 Bridge across the Calcasieu
Ship Channel in Lake Charles, I-10
Bridge across the Mississippi River
in Baton Rouge, La 1 Bridge across
the Atchafalaya River in Simmesport
and the US 190 Bridge across the

Atchafalaya River in Krotz Springs.
Retired from the LA DOTD in 1993
and became President of Berger and
Associates in Baton Rouge.

What attracted you to this project?

The opportunity to return to a
position involved with major bridge
construction.

**What has been most rewarding aspect
of your role on this project?**

The opportunity to apply the
knowledge and experience that I have
gained over the years.

**What has been the most challenging
obstacle you have faced since working
on the project?**

The traffic from traveling back and
forth between Baton Rouge and
New Orleans.

**If you weren't working on the Huey P.
Bridge, what would you be doing?**

Working in my woodworking shop.

**What is your favorite thing about the
Greater New Orleans Area?**

The food.



HUEY P. LONG

BRIDGE WIDENING

Public Outreach Office

1221 Elmwood Park Blvd., Suite 311
Jefferson, LA 70123

